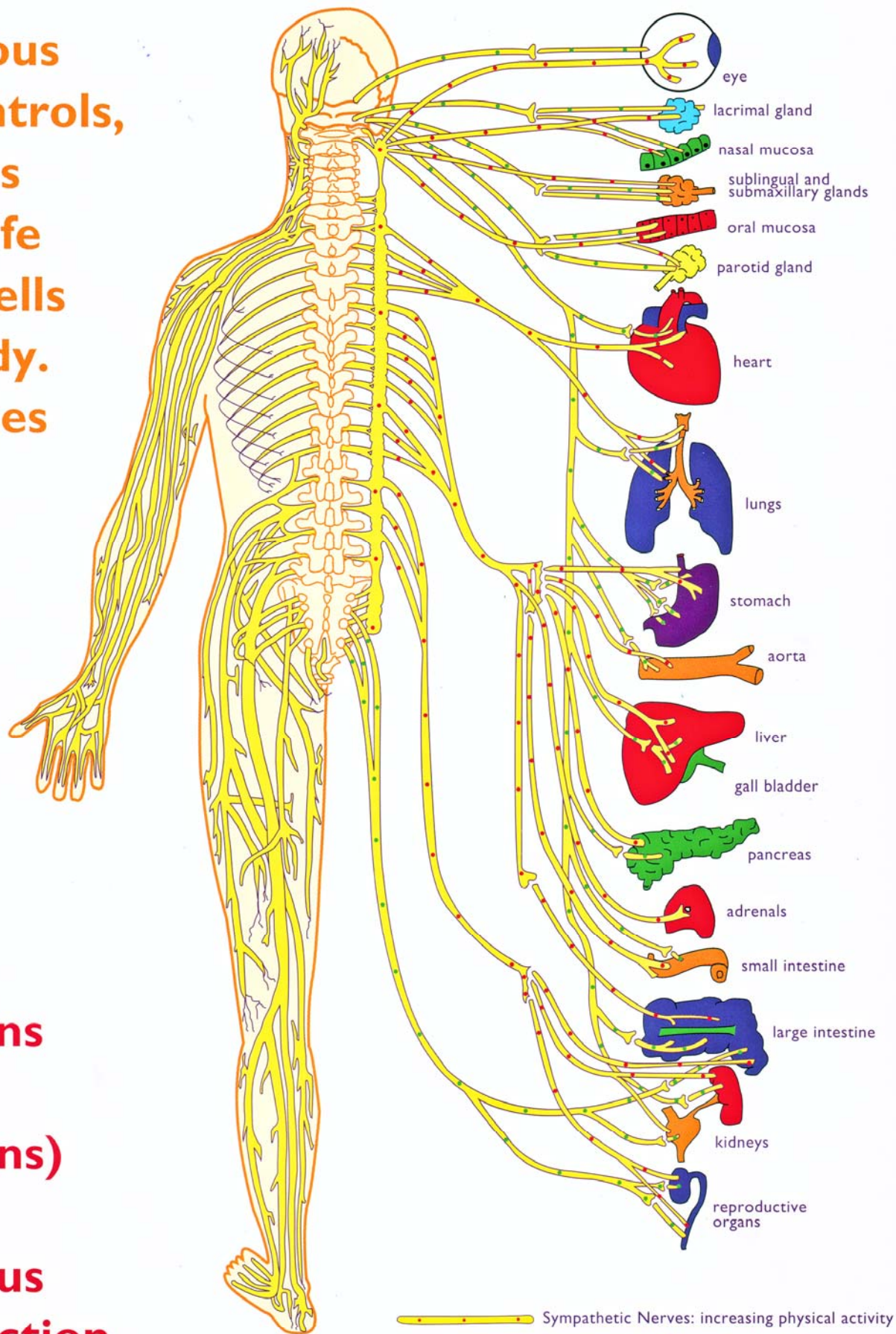


**Your nervous system controls, coordinates and gives life to all the cells of your body. It also senses all of your cells and integrates your emotions and conscious thoughts.**

**Subluxations (spinal malfunctions) interfere with nervous system function.**



**Somatic Nerves**

(left side only shown – right side mirror image)  
 muscles, skin, ligaments,  
 tendons, bones, joints

**Autonomic Nerves**

all organs of the body,  
 glands, blood vessels,  
 'smooth' muscle